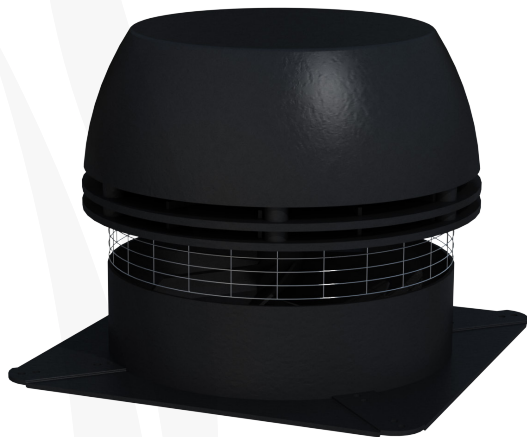


ENERVEX RS CHIMNEY FAN SHOP MANUAL

3940005 08.17



REPLACEMENT OF RS 009-016 MOTOR



Intertek
ETL514733

ENERVEX Inc.
1685 Bluegrass Lakes
Parkway
Alpharetta, GA 30004
USA

P: 770.587.3238
F: 770.587.4731
T: 800.255.2923
info@enervex.com
www.enervex.com

ENERVEX® 
VENTING DESIGN SOLUTIONS

1. REPLACEMENT OF RS 009-016 MOTOR

This repair requires working knowledge of electricity, electrical wiring, motors and hand tools. If you are unsure about your ability to perform this repair, contact a Mechanical Contractor. The Fan Motor and Impeller are heavy, assistance may be required with carrying and installing them.

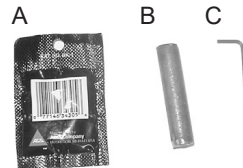


CAUTION

All work should be done by a qualified Mechanical Contractor.

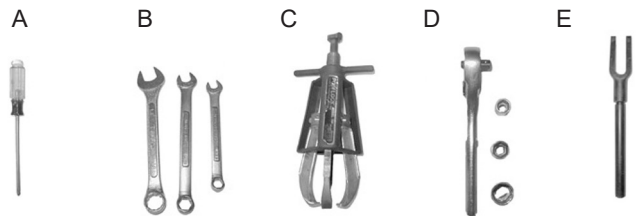
1.1 ENERVEX MOTOR REPLACEMENT KIT

- A. High temperature grease
- B. 1/2" x 2 1/4" Steel dowel
- C. 3 mm Allen wrench



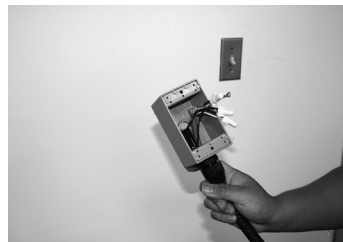
1.2 TOOLS REQUIRED

- A. #3 Phillips head screwdriver
- B. Metric wrench set (8, 10, 13)
- C. Gear puller
- D. Metric socket set (optional)
- E. Pickle fork (RS 016 only)



1.3 INSTRUCTIONS

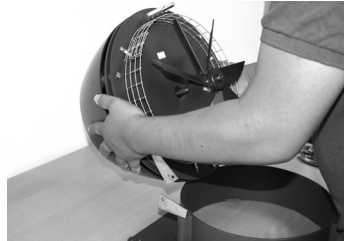
1. Switch off and tag out the power supply to the fan.
2. Note the location of the wires. Disconnect and remove the wires from the junction box. Refer to wiring diagram (Fig.1) on page 5.
3. Loosen and remove the 2 hinge bolts.



-
4. Loosen the locking screw.



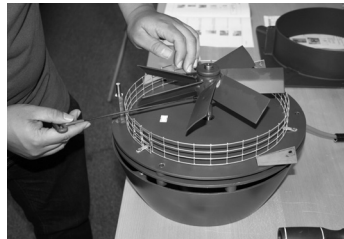
5. Carefully remove the motor and fan assembly.



6. Remove the 3 bolts holding the top cover onto the motor base and remove the top cover. Note the location of the motor wires and the top cover.



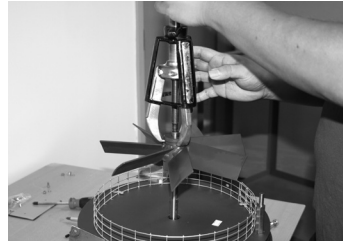
7. Note location of fan on motor shaft. Using a 3 mm Allen wrench, loosen the 2 set screws that hold the fan on the motor shaft.



8. For the RS 016 only: Note location of spacer ring and plates.



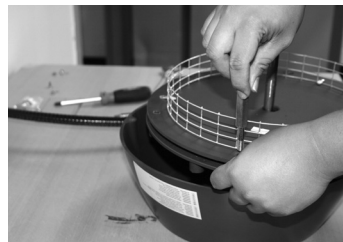
9. Using a gear puller and a 1/2" x 2 1/4" steel extension dowel, pull the fan from the motor shaft.



10. Remove the 2 nuts and bolts holding the hinge plate and the cooling plate to the motor plate.



11. Remove the front positioning bolt and spacer.



12. Remove the cooling plate from the motor plate.



13. Remove the motor mounting screws from the motor plate.



14. RS 016 only: Loosen the set screw on the shaft extension.



15. RS 016 only: Using a pickle fork, leverage the shaft extension from the motor shaft.



16. Reassemble fan in reverse order. Apply a light coat of anti-seize to motor plate, shaft extension and shaft.

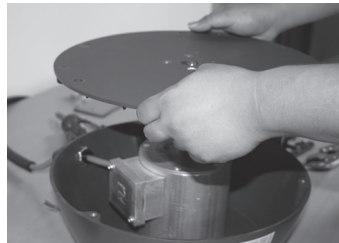
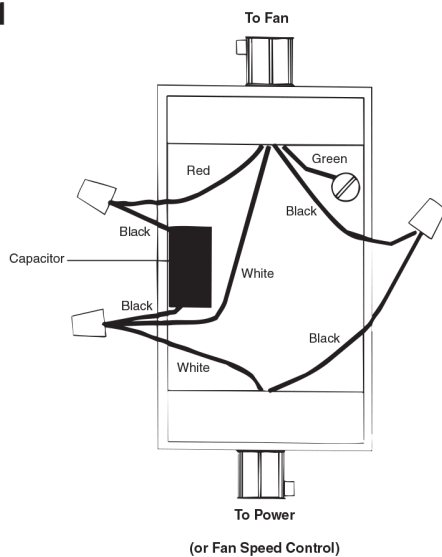


Fig. 1



For technical assistance, please call 800-255-2923.

ENERVEX Inc.
1685 Bluegrass Lakes
Parkway
Alpharetta, GA 30004
USA

P: 770.587.3238
F: 770.587.4731
T: 800.255.2923
info@enervex.com
www.enervex.com

ENERVEX® 
VENTING DESIGN SOLUTIONS