

Steel Chimney Adapter SCA

Description

The SCA steel chimney adapter is used when installing the RSV /RS chimney fan or GSV pizza oven fan on the top of a single, double or triple wall steel chimney.

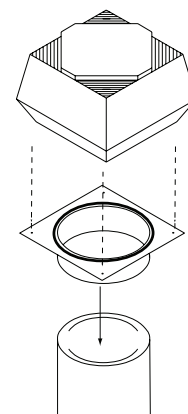
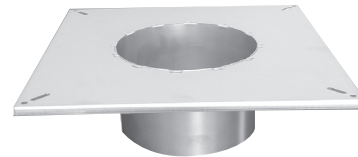
The adapter is designed to slide into the steel chimney for a tight fit. The outer diameter of the collar is 1/8" smaller than the inner diameter of the steel chimney, and has a 5" deep collar.

Material

The steel chimney adapter is made of 16GA, 304 stainless steel.

Warranty

2-year factory warranty



Specifications

| Fan Type | Flange Dimension | VENT Diameter | | | | | | | | | | |
|---|---------------------------------|---------------|--------|--------|--------|--------|---------|--------|---------|---------|---------|--------|
| | | 4" | 5" | 6" | 7" | 8" | 10" | | | | | |
| RSV 009, GSV 009 | 9.4" x 9.4" (240 x 240 mm) | FR1004 | FR1005 | FR1006 | FR1007 | FR1008 | *FR1010 | | | | | |
| | | 4" | 5" | 6" | 7" | 8" | 9" | 10" | 12" | | | |
| RSV 012, GSV 012, RSV 200, GSV 200, RS 009 | 12.2" x 12.2" (310 x 310 mm) | FR2004 | FR2005 | FR2006 | FR2007 | FR2008 | FR2009 | FR2010 | *FR2012 | | | |
| | | 5" | 6" | 7" | 8" | 9" | 10" | 12" | 14" | 16" | 18" | |
| RSV 014, GSV 014, RSV 250, GSV 250, RS 012, RS 014, | 15.6" x 15.6" (395 x 395 mm) | FR3005 | FR3006 | FR3007 | FR3008 | FR3009 | FR3010 | FR3012 | FR3014 | *FR3016 | *FR3018 | |
| | | 8" | 10" | 12" | 14" | 16" | 18" | 20" | 22" | 24" | 26" | |
| RSV 016, GSV 016 RSV 315, GSV 315, RSV 400, GSV 400, RSV 450, GSV 450, RS 016 | 19.7" x 19.7" (500 x 500 mm) | FR4018 | FR4010 | FR4012 | FR4014 | FR4016 | FR4018 | | | | | |
| | 22.1" x 22.1" (562 x 562 mm) | | | | | | | FR4020 | | | | |
| | 24.5" x 24.5" (622 x 622 mm) | | | | | | | FR4022 | | | | |
| | 26.5" x 26.5" (673 x 673 mm) | | | | | | | | | | FR4024 | |
| | 28.3" x 28.3" (718 x 718 mm) | | | | | | | | | | | FR4026 |

*SCA has an over-sized flange

Volko Supply - Enervex Fan Source
www.enervexfansource.com
800 685 8263

Specifications are subject to change without notice.